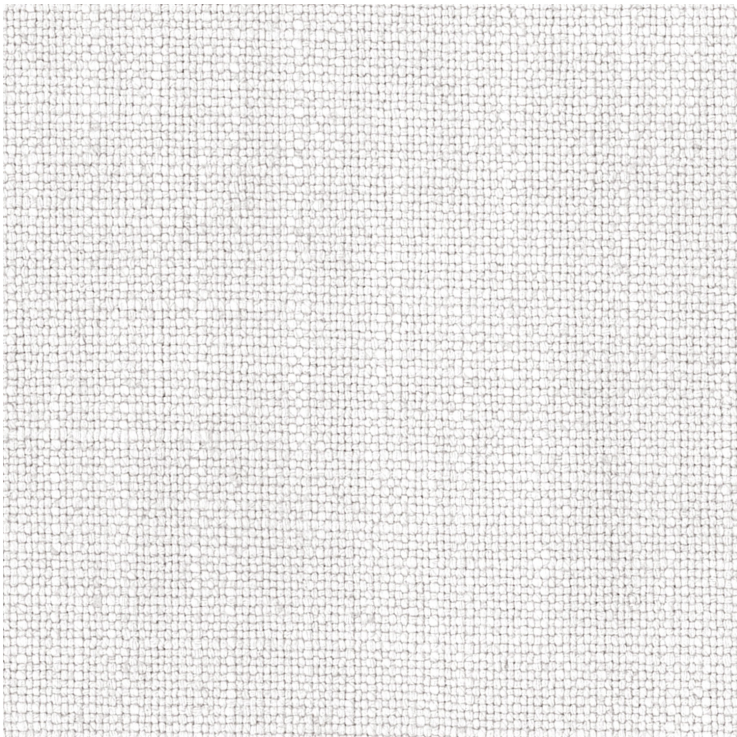
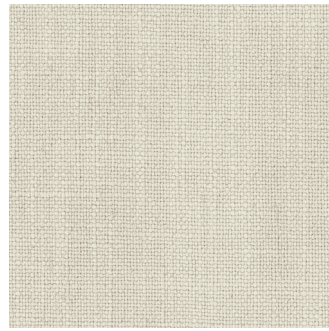

BELMONTE

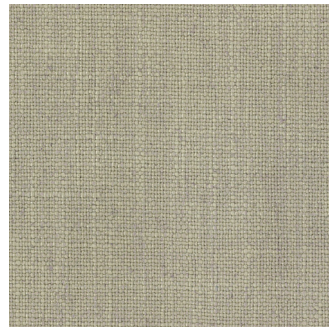
CAT.5



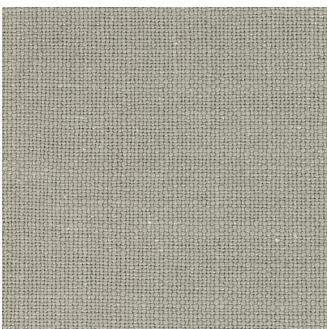
neve



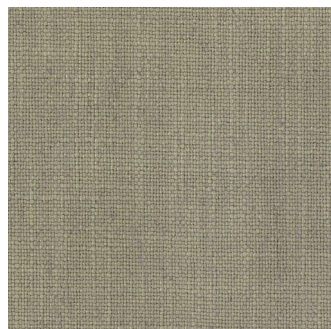
feijoca



amêndoa



míscaro



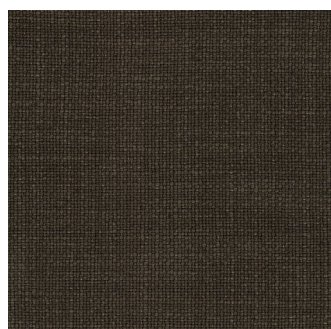
ouriço



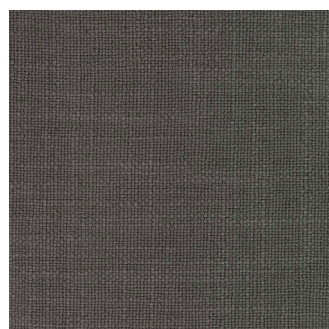
castelo



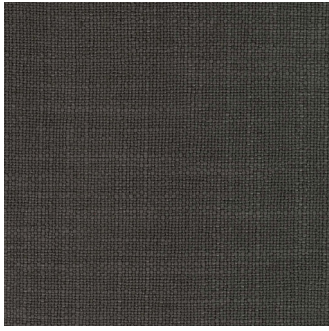
milhafre



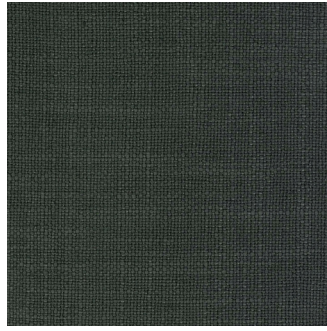
castanha



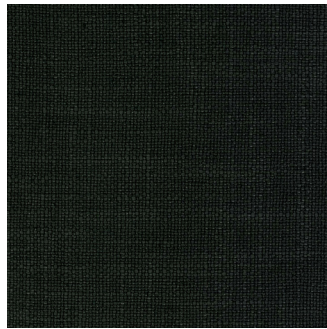
moinho



lavoura



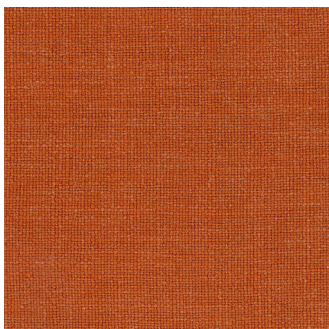
gavião



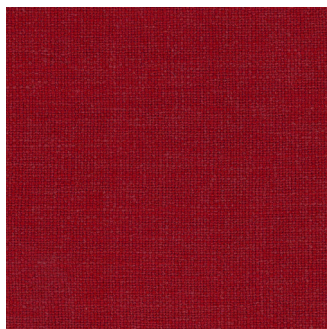
xisto



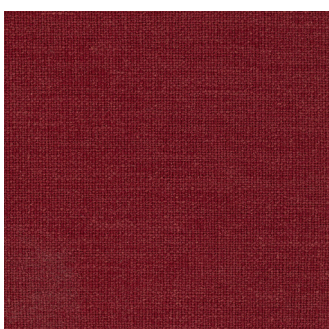
carolo



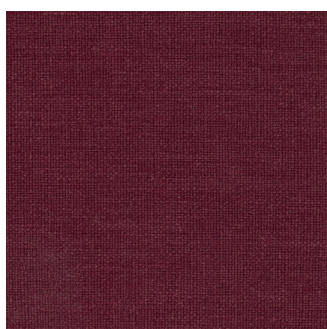
jeropiga



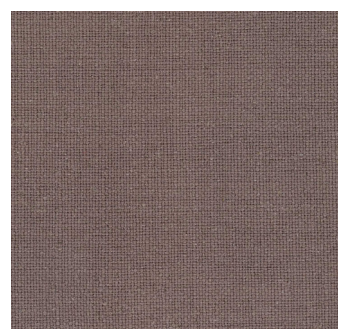
tomate



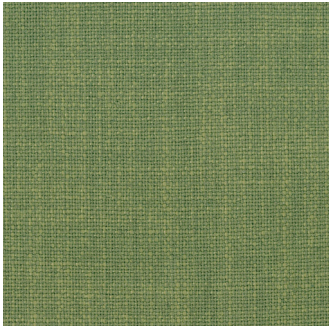
pomar



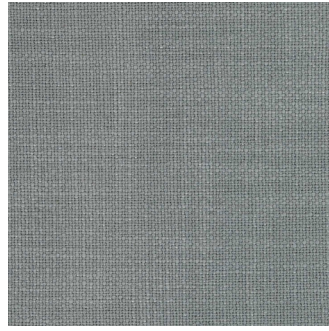
ginja



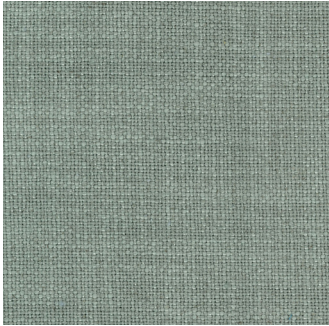
rosmaninho



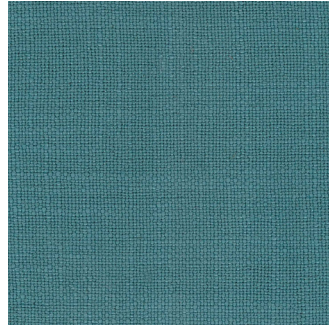
azinheira



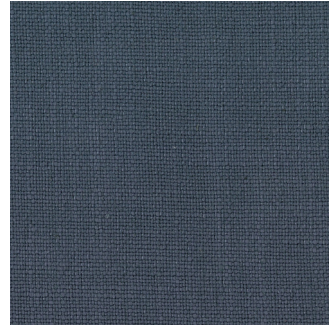
geada



orvalho



nascente



zêzere



abrunho

Datasheet

Ficha técnica-Ficha técnica-Fiche technique

EN

Composition

70% CO | 10% LI | 20% PAC

Weight

645 g/ml ±5%
430 g/m2 ± 5%

Width

140 ± 2% cm

Flammability

BS 5852 PART 0
EN 1021-1

Flammability performance is dependent on foam used.

Abrasion Resistance (Martindale)

ISO 12947-2 (12kPa)

No. of cycles: > 87,000

Pilling

ISO 12945-2: 3

Colour Fastness to Rubbing

ISO 105-X12: 4 to 5

Color Fastness to Light

ISO 105 B02: 3 to 4

Acoustic Absorption

ISO 354

Color Variations

Batch to batch variations may occur within commercial tolerances.

Perpirant

Recyclable

Confort and Lightness

Longevity

Maintenance

Regular cleaning is important in order to keep the upholstery looking its best and to prolong its life. Normal cleaning: vacuum frequently on medium power, ideally every week. Remove non-greasy stains by carefully dabbing with a lint-free cloth or sponge wrung out in clean warm water.

Be careful

Do not rub the material too hard because this could result in loss of color.

PT

Composição

60% LI | 40% PES

Peso

680 ± 5% g/ml
485 ±5% g/m²

Largura

140 ± 2% cm

Classe Ignífuga

BS 5852 PARTE 0
EN 1021-1

Condições ignífugas dependentes do tipo de espuma utilizado.

Resistência à Abrasão (Martindale)

ISO 12947-2 (12kPa)

Nº de ciclos: > 87,000

Borboto

ISO 12945-2: 3

Solidez da Cor à Fricção

ISO 105-X12: 4 a 5

Solidez da Cor à Luz

ISO 105 B02: 3 a 4

Absorção Acústica

ISO 354

Variação de Cores

Existem pequenas variações de cores entre os diferentes lotes.

Transpirável

Reciclável

Conforto e Leveza

Longevidade

Manutenção

Uma limpeza regular é fundamental para preservar a aparência dos tecidos e prolongar a sua vida útil. Limpeza normal: aspirar regularmente com força média, de preferência semanalmente. Para remover manchas não gordurosas limpar com um pano sem pêlos ou uma esponja humedecidos com água morna.

Atenção

Não esfregar fortemente os tecidos para evitar a perda de cores.

ES

Composición

60% LI | 40% PES

Peso

680 ± 5% g/ml
485 ±5% g/m²

Anchura

140 ± 2% cm

Clase a Prueba de Fuego

BS 5852 PART 0
EN 1021-1

Condiciones ignífugas dependientes del tipo de foam utilizado.

Resistencia a la Abrasión (Martindale)

ISO 12947-2 (12kPa)

Nº de ciclos: > 87,000

Pilling

ISO 12945-2: 3

Solidez del Color a la Fricción

ISO 105-X12: 4 a 5

Solidez del color a la luz

ISO 105 B02: 3 a 4

Absorción Acústica

ISO 354

Variación de Color

Hay ligeras variaciones de color entre diferentes lotes.

Transpirable

Reciclable

Comodidad y ligereza

Longevidad

Mantenimiento

La limpieza regular es fundamental para preservar la apariencia de las telas y prolongar su vida. Limpieza normal: Aspirar regularmente con una resistencia media, preferiblemente semanalmente. Para eliminar las manchas no grasas, limpie con un paño sin pelusa o una esponja humedecida con agua tibia.

Atención

No frote demasiado las telas para evitar la pérdida de color.

FR

Composition

60% LI | 40% PES

Poids

680 ± 5% g/ml
485 ±5% g/m²

Largeur

140 ± 2% cm

Classement de Feu

BS 5852 PART 0
EN 1021-1

Conditions ignifuges dépendant du type de mousse utilisé.

Resistance a l'Abrasion (Martindale)

ISO 12947-2 (12kPa)

Nombre de cycles > 87,000

Pilling

ISO 12945-2: 3

Tenue au Frottement

ISO 105-X12: 4 a 5

Solidité des couleurs à la lumière

ISO 105 B02: 3 a 4

Absorption Acoustique

ISO 354

Variation de Couleur

Des variations tolérables de coloris d'un bain à autre peuvent se manifester

Transpirable

Recyclable

Confort et Légèreté

Longévité

Maintenance

Un nettoyage régulier c'est important si l'on souhaite préserver l'apparence du tissu d'ameublement et allonger sa durée de vie. Nettoyage ordinaire: nettoyer régulièrement à l'aspirateur (éventuellement à puissance réduite), de préférence une fois par semaine. Pour enlever une tache nom grasse, tremper dans de l'eau chaude un chiffon propre nom pelucheux, ou une éponge, essorer et frotter doucement.

Attention

Ne pas frotter trop fort le tissu, cela pourrait occasionner un blanchiment.