
X-NET & D-NET

NET

REDE

RED

Datasheet

Ficha técnica - Ficha técnica - Fiche technique

X-NET

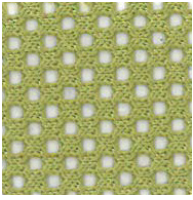
EN	PT	ES	FR
Composition 100% Polyester	Composição 100% Poliéster	Composición 100% Poliéster	Composition 100% Polyester
Abrasion resistance (Martindale) UNI EN ISO 12947-2 +100.000 Martindale Cycles	Resistência à Abrasão (Martindale) UNI EN ISO 12947-2 +100.000 Ciclos Martindale	Resistencia a la Abrasión (Martindale) UNI EN ISO 12947-2 +100.000 Ciclos Martindale	Résistance à l'abrasion (Martindale) UNI EN ISO 12947-2 +100.000 Martindale Tours
Colour Fastness to Light EN ISO 105 B02 (5) EN ISO 105 X12 (4-5)	Solidez da Cor à Luz EN ISO 105 B02 (5) EN ISO 105 X12 (4-5)	Solidez del Color a la Luz EN ISO 105 B02 (5) EN ISO 105 X12 (4-5)	Tenue à la Lumière EN ISO 105 B02 (5) EN ISO 105 X12 (4-5)

D-NET

EN	PT	ES	FR
Composition 100% Polyester	Composição 100% Poliéster	Composición 100% Poliéster	Composition 100% Polyester
Abrasion resistance (Martindale) EN ISO 12947-2 +90.000 Martindale Cycles	Resistência à Abrasão (Martindale) EN ISO 12947-2 +90.000 Ciclos Martindale	Resistencia a la Abrasión (Martindale) EN ISO 12947-2 +90.000 Ciclos Martindale	Résistance à l'abrasion (Martindale) EN ISO 12947-2 +90.000 Martindale Tours
Colour Fastness to Light EN ISO 105 B02 Method 2 (5) (scale 1-8; 8 best value)	Solidez da Cor à Luz EN ISO 105 B02 Método 2 (5) (escala 1-8, 8 melhor valor)	Solidez del Color a la Luz EN ISO 105 B02 Método 2 (5) (escala 1-8, 8 mejor valor)	Tenue à la Lumière EN ISO 105 B02 Méthode 2 (5) (échelle 1-8, 8 meilleure valeur)
Acoustic	Acústica	Acústica	Acoustique

X-NET & D-NET

EN	PT	ES	FR
Color Variations Batch to batch variations may occur within commercial tolerances.	Variação de Cores Existem pequenas variações de cores entre os diferentes lotes.	Variación de Color Hay ligeras variaciones de color entre diferentes lotes.	Variation de Couleur Des variations tolérables de coloris d'un bain à outre peuvent se manifester
Perspirant	Transpirável	Transpirable	Transpirable
Recyclable	Reciclável	Reciclable	Recyclable
Confort and Lightness	Conforto e Leveza	Comodidad y ligereza	Confort et Légèreté
Longevity	Longevidade	Longevidad	Longévité
Maintenance Regular cleaning is important in order to keep the upholstery looking its best and to prolong its life. Normal cleaning: vacuum frequently on medium power, ideally every week. Remove non-greasy stains by carefully dabbing with a lint-free cloth or sponge wrung out in clean warm water.	Manutenção Uma limpeza regular é fundamental para preservar a aparência dos tecidos e prolongar a sua vida útil. Limpeza normal: aspirar regularmente com força média, de preferência semanalmente. Para remover manchas não gordurosas limpar com um pano sem pêlos ou uma esponja humedecidos com água morna.	Mantenimiento La limpieza regular es fundamental para preservar la apariencia de las telas y prolongar su vida. Limpieza normal: Aspirar regularmente con una resistencia media, preferiblemente semanalmente. Para eliminar las manchas no grasas, limpie con un paño sin pelusa o una esponja humedecida con agua tibia.	Maintenance Un nettoyage régulier c'est important si l'on souhaite préserver l'apparence du tissu d'ameublement et allonger sa durée de vie. Nettoyage ordinaire: nettoyer régulièrement à l'aspirateur (éventuellement à puissance réduite), de préférence une fois par semaine. Pour enlever une tache non grasse, tremper dans de l'eau chaude un chiffon propre non pelucheux, ou une éponge, essorer et frotter doucement.
Be careful Do not rub the material too hard because this could result in loss of color.	Atenção Não esfregar fortemente os tecidos para evitar a perda de cores.	Atención No frote demasiado las telas para evitar la pérdida de color.	Attention Ne pas frotter trop fort le tissu, cela pourrait occasionner un blanchiment.



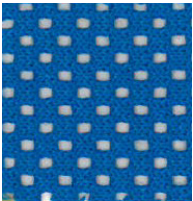
Dive
XV



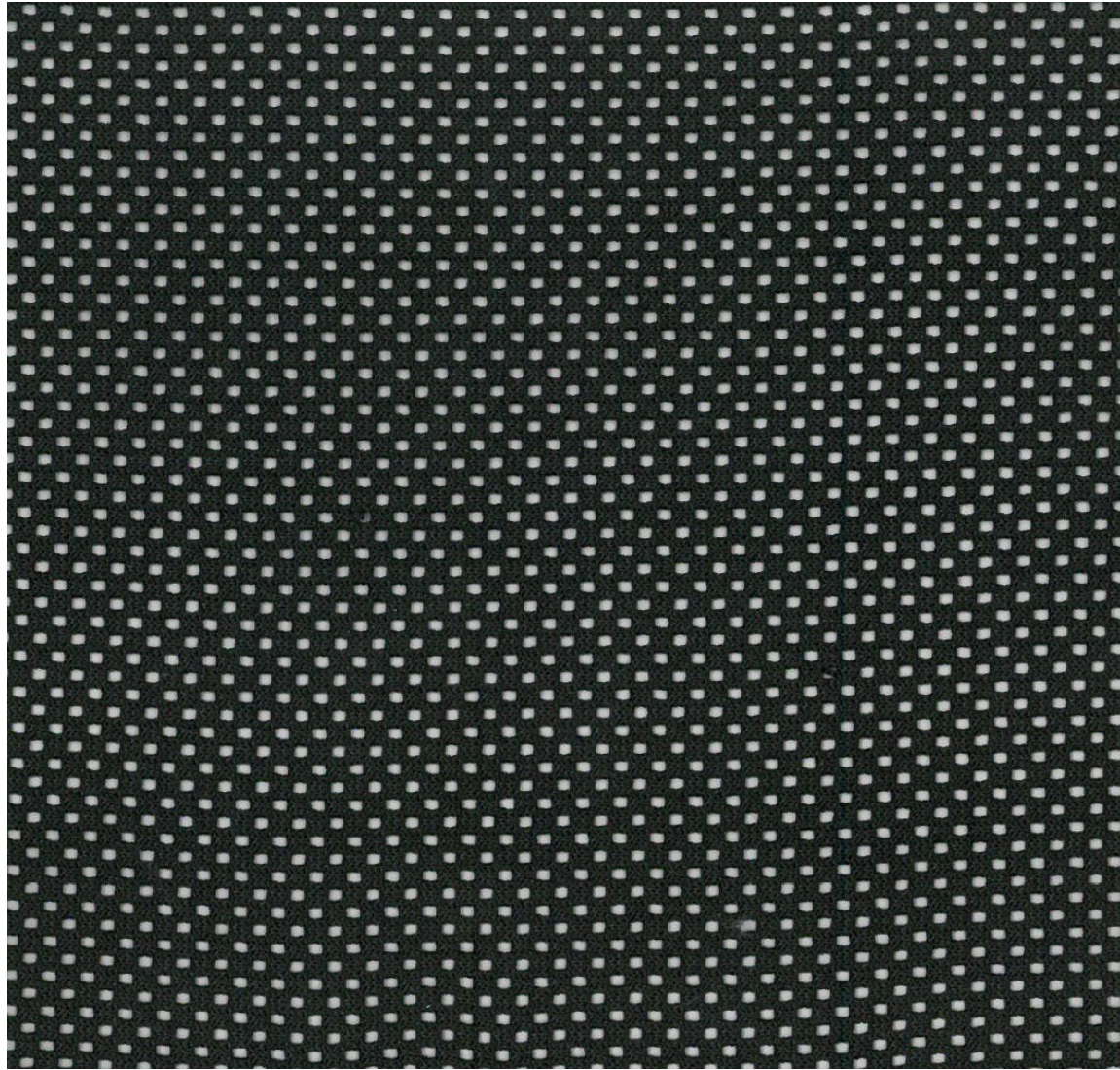
Void
XB



Drop
XT



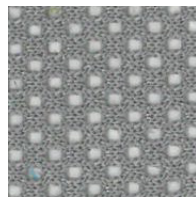
Bounce
XA



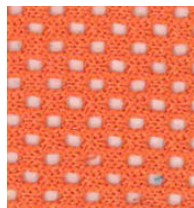
Fall
XP



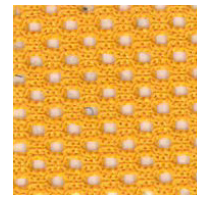
Vault
XC



Jump
XG



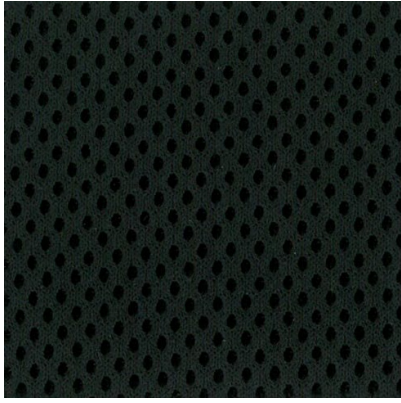
Trampoline
XL



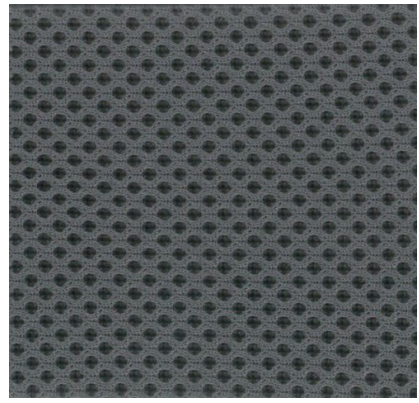
Trapeze
XY



Acrobat
XI



Body
DP



Mass
DG