
SEIA

CAT.2 - L

Datasheet

Ficha técnica - Ficha técnica - Fiche technique

EN

Composition

100% PES

Fire Proof Norm

EN 1021-1:2006 (Cigarette)
BS 5852:2006 CRIB 5

Abrasion Resistance (Martindale)

ISO 12947-2:2000+AC:2006+PN-EN
14465:2005+A1:2007 (12kPa)
+25.000 Martindale Cycles

Pilling

ISO 12945-2:2002: 4

Colour Fastness to Rubbing

ISO 105-X12:2005: 4/5

SVHC 155 Chemicals, regulation (EC) no. 1907/2006

Absence of Azo Compounds, Phthalates and DMF

Color Variations

Batch to batch variations may occur within commercial tolerances.

Perspirant

Recyclable

Confort and Lightness

Longevity

Maintenance

Regular cleaning is important in order to keep the upholstery looking its best and to prolong its life. Normal cleaning: vacuum frequently on medium power, ideally every week. Remove non-greasy stains by carefully dabbing with a lint-free cloth or sponge wrung out in clean warm water.

Be careful

Do not rub the material too hard because this could result in loss of color.

PT

Composição

100% PES

Classe Ignífuga

EN 1021-1:2006 (Cigarro)
BS 5852:2006 CRIB 5

Resistência à Abrasão (Martindale)

ISO 12947-2:2000+AC:2006+PN-EN
14465:2005+A1:2007 (12kPa)
+25.000 Ciclos Martindale

Borboto

ISO 12945-2:2002: 4

Solidez da Cor à Fricção

ISO 105-X12:2005: 4/5

SVHC 155 Químicos, regulação (EC) nº 1907/2006

Ausência de Azo-Compostos, Ftalatos e DMF

Varição de Cores

Existem pequenas variações de cores entre os diferentes lotes.

Transpirável

Reciclável

Conforto e Leveza

Longevidade

Manutenção

Uma limpeza regular é fundamental para preservar a aparência dos tecidos e prolongar a sua vida útil. Limpeza normal: aspirar regularmente com força média, de preferência semanalmente. Para remover manchas não gordurosas limpar com um pano sem pêlos ou uma esponja humedecidos com água morna.

Atenção

Não esfregar fortemente os tecidos para evitar a perda de cores.

ES

Composición

100% PES

Clase a Prueba de Fuego

EN 1021-1:2006 (Cigarro)
BS 5852:2006 CRIB 5

Resistencia a la Abrasión (Martindale)

ISO 12947-2:2000+AC:2006+PN-EN
14465:2005+A1:2007 (12kPa)
+25.000 Ciclos Martindale

Pilling

ISO 12945-2:2002: 4

Solidez del Color a la Fricción

ISO 105-X12:2005: 4/5

SVHC 155 Químicos, reglamento (EC) nº 1907/2006

Ausencia de Compuestos Azoicos, Ftalatos y DMF

Variación de Color

Hay ligeras variaciones de color entre diferentes lotes.

Transpirable

Reciclable

Comodidad y ligereza

Longevidad

Mantenimiento

La limpieza regular es fundamental para preservar la apariencia de las telas y prolongar su vida. Limpieza normal: Aspirar regularmente con una resistencia media, preferiblemente semanalmente. Para eliminar las manchas no grasas, limpie con un paño sin pelusa o una esponja humedecida con agua tibia.

Atención

No frote demasiado las telas para evitar la pérdida de color.

FR

Composition

100% PES

Classement de Feu

EN 1021-1:2006 (Cigarette)
BS 5852:2006 CRIB 5

Résistance à l'Abrasion (Martindale)

ISO 12947-2:2000+AC:2006+PN-EN
14465:2005+A1:2007 (12kPa)
+25.000 Martindale Tours

Pilling

ISO 12945-2:2002: 4

Tenue au Frottement

ISO 105-X12:2005: 4/5

SVHC 155 Chimiques, réglementation (EC) no. 1907/2006

Absence de composés Azoïques, les Phthalates et le DMF

Variation de Couleur

Des variations tolerables de coloris d'un bain à outre peuvent se manifester

Transpirable

Recyclable

Confort et Légèreté

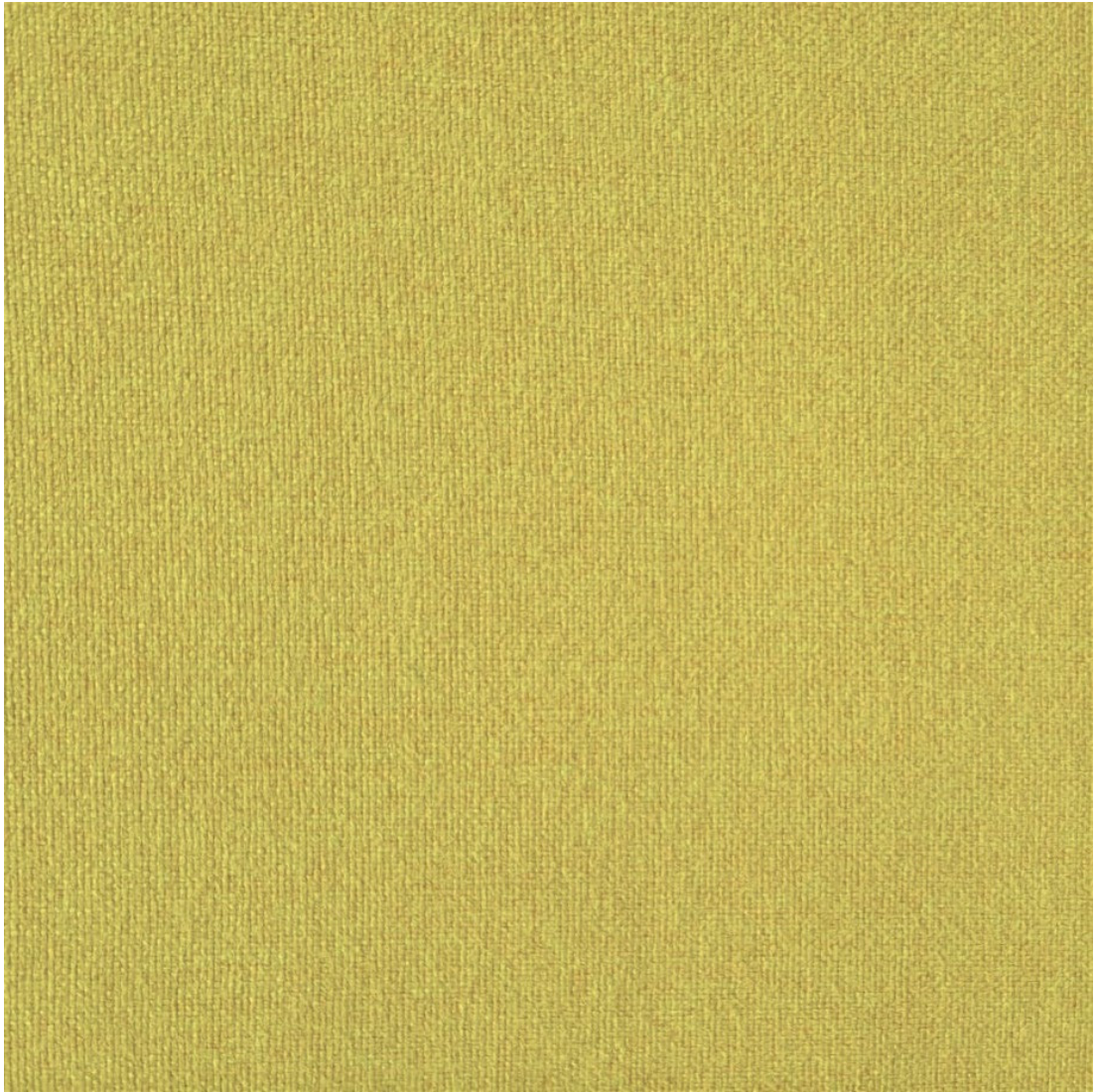
Longévité

Maintenance

Un nettoyage régulier c'est important si l'on souhaite préserver l'apparence du tissu d'ameublement et allonger sa durée de vie. Nettoyage ordinaire: nettoyer régulièrement à l'aspirateur (éventuellement à puissance réduite), de préférence une fois par semaine. Pour enlever une tache non grasse, tremper dans de l'eau chaude un chiffon propre non pelucheux, ou une éponge, essorer et frotter doucement.

Attention

Ne pas frotter trop fort le tissu, cela pourrait occasionner un blanchiment.



Limão
01140009



Nogueira
01140004



Natural
01140002



Faia
01140003



Carvão
01140019



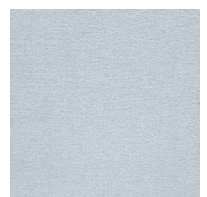
Maçã
01140010



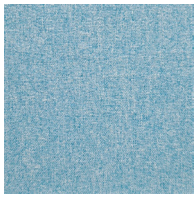
Pardo
01140018



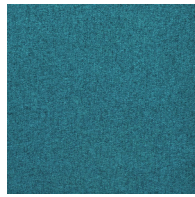
Granito
01140017



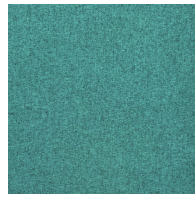
Névoa
01140013



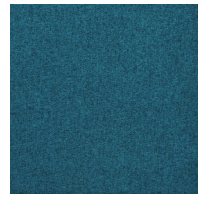
Lagoa
01140005



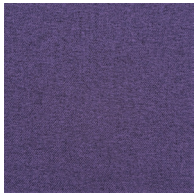
Arando
01140006



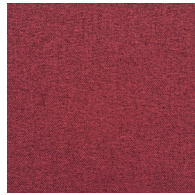
Menta
01140011



Mirtilo
01140007



Malva
01140008



Cereja
01140016