

---

MIRA

---

CAT.1 - M

---

# Datasheet

Ficha técnica - Ficha técnica - Fiche technique

EN

## Composition

100% PES

## Fire Proof Norm

EN 1021-1:2006 (Cigarette)  
BS 5852:2006 CRIB 0

## Abrasion Resistance (Martindale)

ISO 12947-2:1998 + Cor.1:2002 (12kPa) -  
+100.000 Martindale Cycles

## Pilling

ISO 12947-2:1998 + Cor.1:2002: 4/5

## Colour Fastness to Rubbing

ISO 105-X12:2001: 4/5

## SVHC 155 Chemicals, regulation (EC) no. 1907/2006

## Absence of Azo Compounds, Phthalates and DMF

## Color Variations

Batch to batch variations may occur within commercial tolerances.

## Perspirant

## Recyclable

## Confort and Lightness

## Longevity

## Maintenance

Regular cleaning is important in order to keep the upholstery looking its best and to prolong its life. Normal cleaning: vacuum frequently on medium power, ideally every week. Remove non-greasy stains by carefully dabbing with a lint-free cloth or sponge wrung out in clean warm water.

## Be careful

Do not rub the material too hard because this could result in loss of color.

PT

## Composição

100% PES

## Classe Ignífuga

EN 1021-1:2006 (Cigarro)  
BS 5852:2006 CRIB 0

## Resistência à Abrasão (Martindale)

ISO 12947-2:1998 + Cor.1:2002 (12kPa) -  
+100.000 Ciclos Martindale

## Borboto

ISO 12947-2:1998 + Cor.1:2002: 4/5

## Solidez da Cor à Fricção

ISO 105-X12:2001: 4/5

## SVHC 155 Químicos, regulação (EC) nº 1907/2006

## Ausência de Azo-Compostos, Ftalatos e DMF

## Varição de Cores

Existem pequenas variações de cores entre os diferentes lotes.

## Transpirável

## Reciclável

## Conforto e Leveza

## Longevidade

## Manutenção

Uma limpeza regular é fundamental para preservar a aparência dos tecidos e prolongar a sua vida útil. Limpeza normal: aspirar regularmente com força média, de preferência semanalmente. Para remover manchas não gordurosas limpar com um pano sem pêlos ou uma esponja humedecidos com água morna.

## Atenção

Não esfregar fortemente os tecidos para evitar a perda de cores.

ES

## Composición

100% PES

## Clase a Prueba de Fuego

EN 1021-1:2006 (Cigarrillo)  
BS 5852:2006 CRIB 0

## Resistencia a la Abrasión (Martindale)

ISO 12947-2:1998 + Cor.1:2002 (12kPa) -  
+100.000 Ciclos Martindale

## Pilling

ISO 12947-2:1998 + Cor.1:2002: 4/5

## Solidez del Color a la Fricción

ISO 105-X12:2001: 4/5

## SVHC 155 Químicos, reglamento (EC) nº 1907/2006

## Ausencia de Compuestos Azoicos, Ftalatos y DMF

## Variación de Color

Hay ligeras variaciones de color entre diferentes lotes.

## Transpirable

## Reciclable

## Comodidad y ligereza

## Longevidad

## Mantenimiento

La limpieza regular es fundamental para preservar la apariencia de las telas y prolongar su vida. Limpieza normal: Aspirar regularmente con una resistencia media, preferiblemente semanalmente. Para eliminar las manchas no grasas, limpie con un paño sin pelusa o una esponja humedecida con agua tibia.

## Atención

No frote demasiado las telas para evitar la pérdida de color.

FR

## Composition

100% PES

## Classement de Feu

EN 1021-1:2006 (Cigarette)  
BS 5852:2006 CRIB 0

## Resistance a l'Abrasion (Martindale)

ISO 12947-2:1998 + Cor.1:2002 (12kPa) -  
+100.000 Martindale Tours

## Pilling

ISO 12947-2:1998 + Cor.1:2002: 4/5

## Tenue au Frottement

ISO 105-X12:2001: 4/5

## SVHC 155 Chimiques, réglementation (EC) no. 1907/2006

## Absence de composés Azoïques, les Phtalates et le DMF

## Variation de Couleur

Des variations tolérables de coloris d'un bain à l'autre peuvent se manifester

## Transpirable

## Recyclable

## Confort et Légèreté

## Longévité

## Maintenance

Un nettoyage régulier c'est important si l'on souhaite préserver l'apparence du tissu d'ameublement et allonger sa durée de vie. Nettoyage ordinaire: nettoyer régulièrement à l'aspirateur (éventuellement à puissance réduite), de préférence une fois par semaine. Pour enlever une tache non grasse, tremper dans de l'eau chaude un chiffon propre non pelucheux, ou une éponge, essorer et frotter doucement.

## Attention

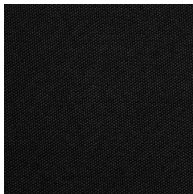
Ne pas frotter trop fort le tissu, cela pourrait occasionner un blanchiment.



Granito  
01138014



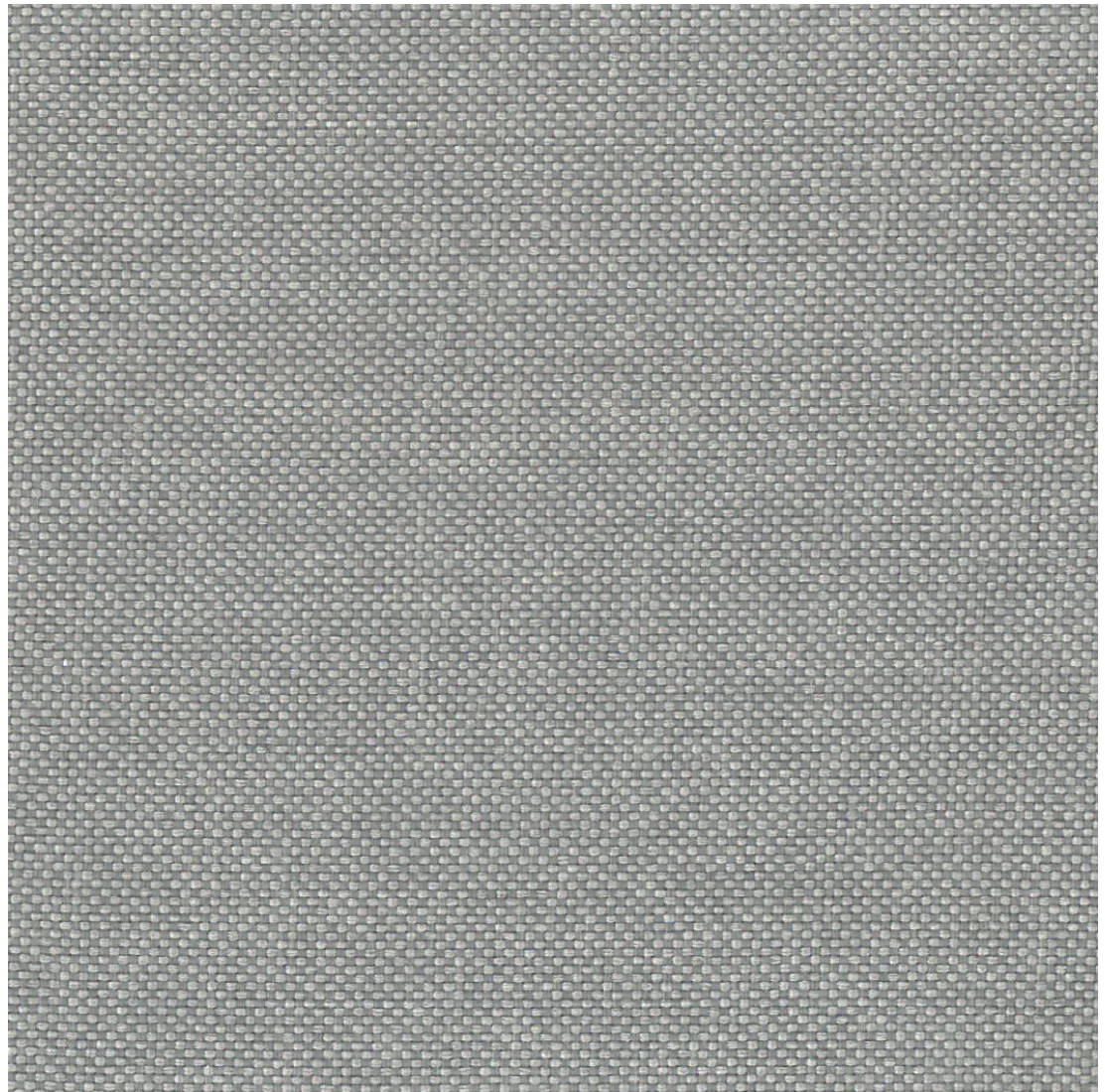
Xisto  
01138015



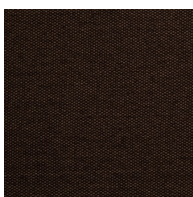
Preto  
01138016



Antracite  
01138025



Neblina  
01138013



Ébano  
01138011



Carvalho  
01138006



Palha  
01138005



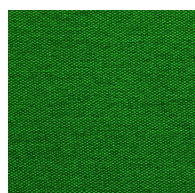
Aveia  
01138004



Caqui  
01138003



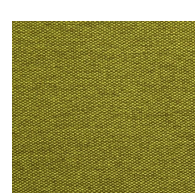
Branco  
01138002



Floresta  
01138024



Musgo  
01138010



Abacate  
01138009

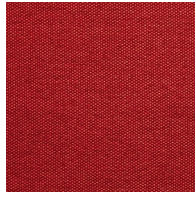


Laranja  
01138008



Vermelho

01138023



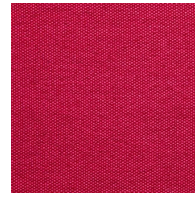
Lava

01138022



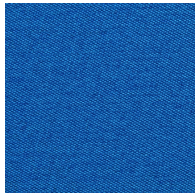
Malva

01138012



Romã

01138007



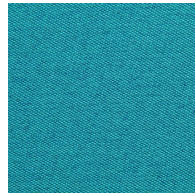
Azul

01138021



Oceano

01138001



Turquesa

01138020