

---

LISBOA

---

CAT.5 GG

---

# Datasheet

Ficha técnica - Ficha técnica - Fiche technique

EN	PT	FR	ES
<b>Composition</b>	<b>Composição</b>	<b>Composition</b>	<b>Composición</b>
100% Poluester - Trevira CS	100% Poliéster- Trevira CS	100% Polyestere - Trevira CS	100% poliéster - Trevira CS
The flame retardant properties are inherent to the fibre	As propriedades ignífugas são intrínsecas à fibra	Là qualité ininflammable est une caractéristique de la fibre	Las propiedades ignífugas son inherentes a la fibra.
<b>Weight</b>	<b>Peso</b>	<b>Poids</b>	<b>Peso</b>
365 ± 5% g/ml 260 ± 5% g/m <sup>2</sup>	365 ± 5% g/ml 260 ± 5% g/m <sup>2</sup>	365 ± 5% g/ml 260 ± 5% g/m <sup>2</sup>	365 ± 5% g/ml 260 ± 5% g/m <sup>2</sup>
<b>Width</b>	<b>Largura</b>	<b>Largeur</b>	<b>Ancho</b>
140 ± 2% cm	140 ± 2% cm	140 ± 2% cm	140 ± 2%cm
<b>Abrasion resistance (Martindale)</b>	<b>Resistência à abrasão (Martindale)</b>	<b>Résistance à l'abrasion (Martindale)</b>	<b>Resistencia a la abrasión (Martindale)</b>
UNI EN ISO 12947/2	UNI EN ISO 12947/2	UNI EN ISO 12947/2	UNI EN ISO 12947/2
70.000 ± 10% rubs	70000 ± 10% ciclos	70.000 ± 10% tours	70.000 ± 10% frota
<b>Pilling</b>	<b>Borboto</b>	<b>Pilling</b>	<b>Bolitas</b>
UNI EN ISO 12945/2	UNI EN ISO 12945/2	UNI EN ISO 12945/2	UNI EN ISO 12945/2
5 (standard photos)	5 (foto standard)	5 (photos standard)	5 (fotos estándar)
Tolerance: from 4 to 5	Tolerância: de 4 a 5	Tolérance: de 4 à 5	Tolerancia: de 4 a 5
<b>Light fastness</b>	<b>Solidez à luz</b>	<b>Solidité à la lumière</b>	<b>Resistencia a la luz</b>
UNI EN ISO 105-B02	UNI EN ISO 105-B02	UNI EN ISO 105-B02	UNI EN ISO 105-B02
6 (blue scale)	6 (escala de azuis)	6 (échelle des bleu)	6 (escala azul)
Tolerance: from 5 to 8	Tolerância: de 5 a 8	Tolérance: de 5 à 8	Tolerancia: de 5 a 8
<b>Fastness to rubbing</b>	<b>Solidez à fricção</b>	<b>Solidité au frottement</b>	<b>Solidez al frote</b>
UNI EN ISO 105-X12	UNI EN ISO 105-X12	UNI EN ISO 105-X12	UNI EN ISO 105-X12
4/5 (grey scale)	4/5 (escala de cinzentos)	4/5 (échelle des gris)	4/5 (escala de grises)
Tolerance: from 4 to 5	Tolerância: de 4 a 5	Tolérance: de 4 à 5	Tolerancia: de 4 a 5
<b>Flammability</b>	<b>Classe ignífuga</b>	<b>Classement au feu</b>	<b>Inflamabilidad</b>
UNI 9174-8456 Class CI	UNI 9174-8456 Class CI	UNI 9174-8456 Class CI	UNI 9174-8456 Clase CI
DIN 4102 Class B1	UNI 9174-8456 Class C1	DIN 4102 Class B1	DIN 4102 Cierre B1
RF 92501-7 Class MI	DIN 4102 Class B1	RF 92501-7 Class MI	RF 92501-7 Clase MI
BS 5852 Crib 5	NF 92501-7 Class M1	BS 5852 Crib 5	BS 5852 Cuna 5
EN 1021-1	BS 5852 CRIB 5	EN 1021-1	EN 1021-1
EN 1021-2	EN 1021-1	EN 1021-2	EN 1021-2
IMO Res. A 652 (16) Part 8	EN 1021-2	IMO Res. A 652 (16) Part 8	Res. de la OMI A 652 (16) Parte 8
IMO Res. A 471 (XII) Part 7	IMO Res. A 652 (16) Part 8	IMO Res. A 471 (XII) Part 7	Res. de la OMI A 471 (XII) Parte 7
BS 7176 Medium Hazard	IMO Res. A 471 (XII) Part 7	BS 7176 Medium Hazard	BS 7176 Riesgo medio
DF D 60013 Class AM 18	BS 7176 Medium Hazard	NF D 60013 Class Am 18	DF D 60013 Cierre AM 18
Flame retardant performance is dependant upon the foam used	NF D 60013 Class AM 18	Performance de flammabilité dépend de la mousse utilisée	El rendimiento del retardante de llama depende de la espuma utilizada
<b>Colour</b>	<b>Cor</b>	<b>Coloris</b>	<b>Color</b>
Batch to batch colour variations may occur within commercial tolerances	Cor	Légères différences de couleur entre un lot et l'autre peuvent se manifester dans les tolérances commerciales	Las variaciones de color de lote a lote pueden ocurrir dentro de las tolerancias comerciales
<b>Cleaning and washing</b>	<b>Manutenção e limpeza</b>	<b>Entretien et nettoyage</b>	<b>Limpieza y lavado</b>
	Poderão existir variações de cor entre os diferentes lotes dentro do padrão estabelecido comercialmente.		
<b>Guarantee</b>	<b>Manutenção e limpeza</b>	<b>Garantie</b>	<b>Garantizar</b>
According to the factory's terms and conditions of guarantee		Selon les termes et les conditions de garantie de Fabrication.	Según los términos y condiciones de garantía de fábrica.
	<b>Garantia</b>		
	De acordo com termos e condições de garantia de fábrica.		



01146008



01146011



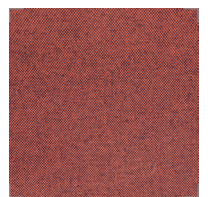
01146010



01146009



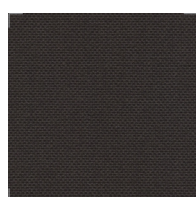
01146007



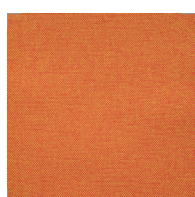
01146003



01146004



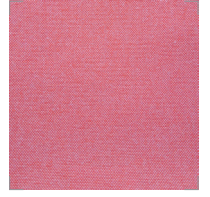
01146006



01146005

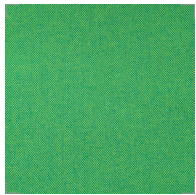


01146002

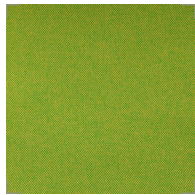


01146001

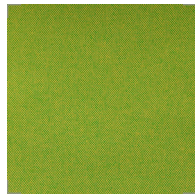




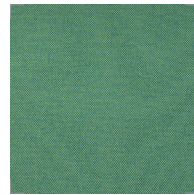
01146019



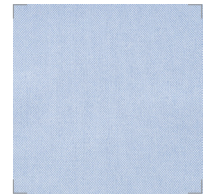
01146023



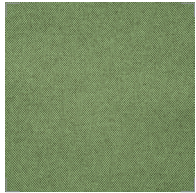
01146024



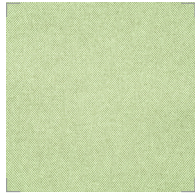
01146020



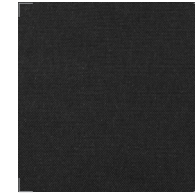
01146015



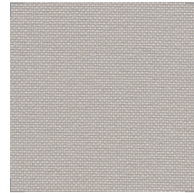
01146021



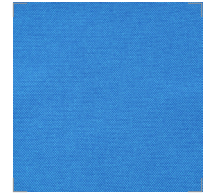
01146022



01146029



01146025



01146016



01146018



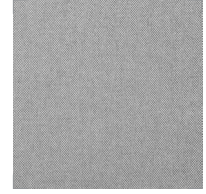
01146017



01146013



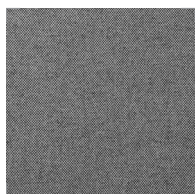
01146012



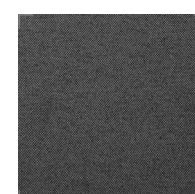
01146026



01146014



01146027



01146028