
BLISS

CAT.3 - B

Datasheet

Ficha técnica - Ficha técnica - Fiche technique

EN

Composition

100% Polyester FR
The flame retardant properties are inherent to the fibre

Abrasion Resistance (Martindale)

UNI EN ISO 12947/2 (12 kPa)
100.000 ± 10% rubs

Pilling

UNI EN ISO 12945/2
5 (standard photos)
Tolerance: from 4 to 5

Colour Fastness to Light

UNI EN ISO 105-BO2
6 (blue scale)
Tolerance: from 4 to 8

Colour Fastness to Rubbing

UNI EN ISO 105-X12
6 (grey scale)
Tolerance: from 4 to 5

Flammability

UNI 9175 Class 1 IM
BS 5852 Crib 5
EN 1021-1
EN 1021-2
BS 7176 Medium Hazard
California TB117

Flame retardant performance is dependant upon the foam used.

Color Variations

Batch to batch variations may occur within commercial tolerances.

Maintenance

Regular cleaning is important in order to keep the upholstery looking its best and to prolong its life. Normal cleaning: vacuum frequently on medium power, ideally every week. Remove non-greasy stains by carefully dabbing with a lint-free cloth or sponge wrung out in clean warm water.

Be careful

Do not rub the material too hard because this could result in loss of color.

PT

Composição

100% Poliéster FR
As propriedades ignífugas são intrínsecas à fibra.

Resistência à Abrasão (Martindale)

UNI EN ISO 12947/2 (12 kPa)
100.000 ± 10% ciclos

Borboto

UNI EN ISO 12945/2
5 (foto standard)
Tolerância: de 4 a 5

Solidez da Cor à Luz

UNI EN ISO 105-BO2
6 (escala de azuis)
Tolerância: de 4 a 8

Solidez da Cor à Fricção

UNI EN ISO 105-X12
6 (escala de cinzentos)
Tolerância: de 4 a 5

Classe Ignífuga

UNI 9175 Class 1 IM
BS 5852 Crib 5
EN 1021-1
EN 1021-2
BS 7176 Medium Hazard
California TB117

O grau de resistência ao fogo depende da espuma utilizada.

Variação de Cores

Existem pequenas variações de cores entre os diferentes lotes.

Manutenção

Uma limpeza regular é fundamental para preservar a aparência dos tecidos e prolongar a sua vida útil. Limpeza normal: aspirar regularmente com força média, de preferência semanalmente. Para remover manchas não gordurosas limpar com um pano sem pêlos ou uma esponja humedecidos com água morna.

Atenção

Não esfregar fortemente os tecidos para evitar a perda de cores.

ES

Composición

100% Poliéster FR
La calidad ininflamable es una característica de la fibra.

Resistencia a la Abrasión (Martindale)

UNI EN ISO 12947/2 (12 kPa)
100.000 ± 10% ciclos

Pilling

UNI EN ISO 12945/2
5 (foto standard)
Tolerancia: de 4 a 5

Solidez del Color a la Luz

UNI EN ISO 105-BO2
6 (escala azul)
Tolerancia: de 4 a 8

Solidez del Color a la Fricción

UNI EN ISO 105-X12
6 (escala de grises)
Tolerancia: de 4 a 5

Clase de retardante de llama

UNI 9175 Class 1 IM
BS 5852 Crib 5
EN 1021-1
EN 1021-2
BS 7176 Medium Hazard
California TB117

El grado de resistencia al fuego depende de la espuma utilizada.

Variación de Color

Hay ligeras variaciones de color entre diferentes lotes.

Mantenimiento

La limpieza regular es fundamental para preservar la apariencia de las telas y prolongar su vida. Limpieza normal: Aspirar regularmente con una resistencia media, preferiblemente semanalmente. Para eliminar las manchas no grasas, limpie con un paño sin pelusa o una esponja humedecida con agua tibia.

Atención

No frote demasiado las telas para evitar la pérdida de color.

FR

Composition

100% Polyestere FR
Las propiedades ignífugas son intrínsecas a la fibra.

Resistance a l'Abrasion (Martindale)

UNI EN ISO 12947/2 (12 kPa)
100.000 ± 10% tours

Pilling

UNI EN ISO 12945/2
5 (photos standard)
Tolérance: de 4 à 5

Tenue à la Lumière

UNI EN ISO 105-BO2
6 (échelle des bleu)
Tolérance: de 4 à 8

Tenue au Frottement

UNI EN ISO 105-X12
6 (échelle des gris)
Tolérance: de 4 à 5

Classement au feu

UNI 9175 Class 1 IM
BS 5852 Crib 5
EN 1021-1
EN 1021-2
BS 7176 Medium Hazard
California TB117

Performance de flammabilité dépend de la mousse utilisée

Variation de Couleur

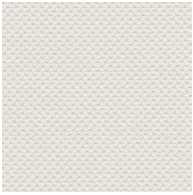
Des variations tolerables de coloris d'un bain à outre peuvent se manifester

Maintenance

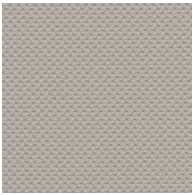
Un nettoyage régulier c'est important si l'on souhaite préserver l'apparence du tissu d'ameublement et allonger sa durée de vie. Nettoyage ordinaire: nettoyer régulièrement à l'aspirateur (éventuellement à puissance réduite), de préférence une fois par semaine. Pour enlever une tache nom grasse, tremper dans de l'eau chaude un chiffon propre nom pelucheux, ou une éponge, essorer et frotter doucement.

Attention

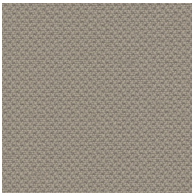
Ne pas frotter trop fort le tissu, cela pourrait occasionner un blanchiment.



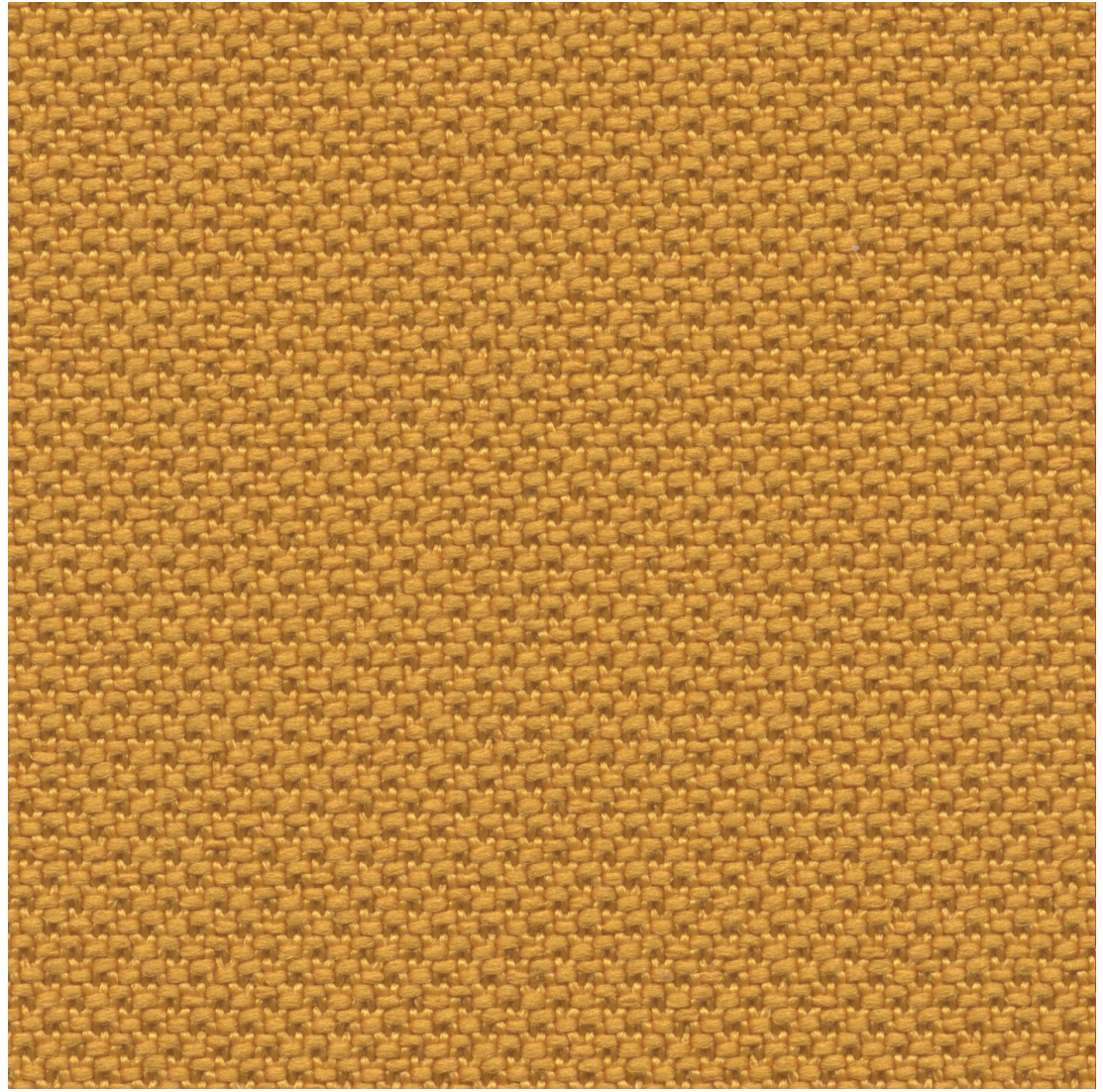
Cru
01206009



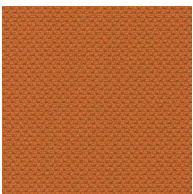
Bege
01206008



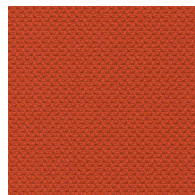
Palha
01206007



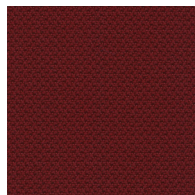
Amarelo
01206005



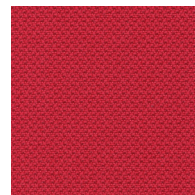
Laranja
01206004



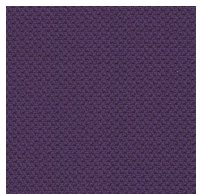
Tijolo
01206003



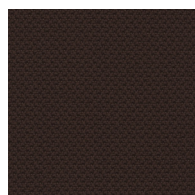
Vinho
01206001



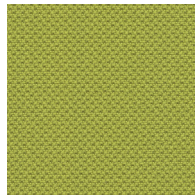
Vermelho
01206002



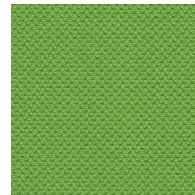
Malva
01206010



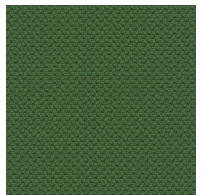
Café
01206006



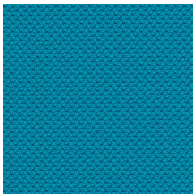
Lima
01206019



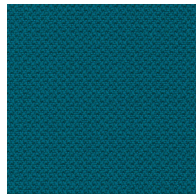
Primavera
01206020



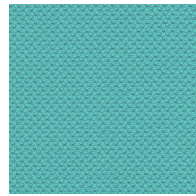
Floresta
01206021



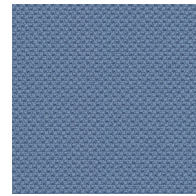
Turquesa
01206016



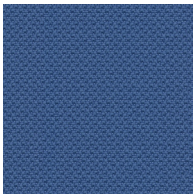
Arando
01206017



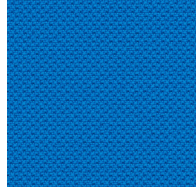
Menta
01206018



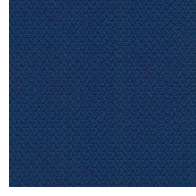
Céu
01206014



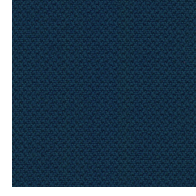
Celeste
01206015



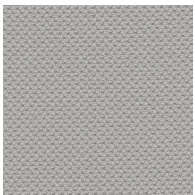
Laguna
01206011



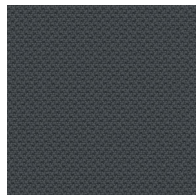
Oceano
01206012



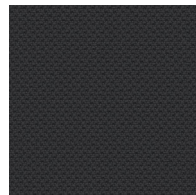
Noite
01206013



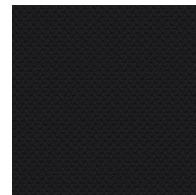
Granito
01206022



Antracite
01206023



Carvão
01206024



Preto
01206025